

Note: The underground services information has been supplied by Amethyst Surveys Ltd.

UTILITY KEY

Legend for utility symbols including Electric Cable, Water Pipe, Gas Pipe, Foul Drainage, etc.

ABBREVIATIONS

Table of abbreviations for various materials and components like AC, AR, BB, BD, etc.

DISCLAIMER

Electro-magnetic techniques and/or ground penetrating radar have been used in the location of underground services...

Where services are non-metallic positions may be taken from records, trench scars & surface detail...

Marker plates where available where ground penetrating radar has been used it will primarily have been to identify underground utilities...

Client: LAMBERT SMITH HAMPTON (LONDON)

Project: CASTLE MANOR ACADEMY EASTERN AVENUE HAVERHILL, SUFFOLK, CB9 7YD

Title: UTILITY SURVEY

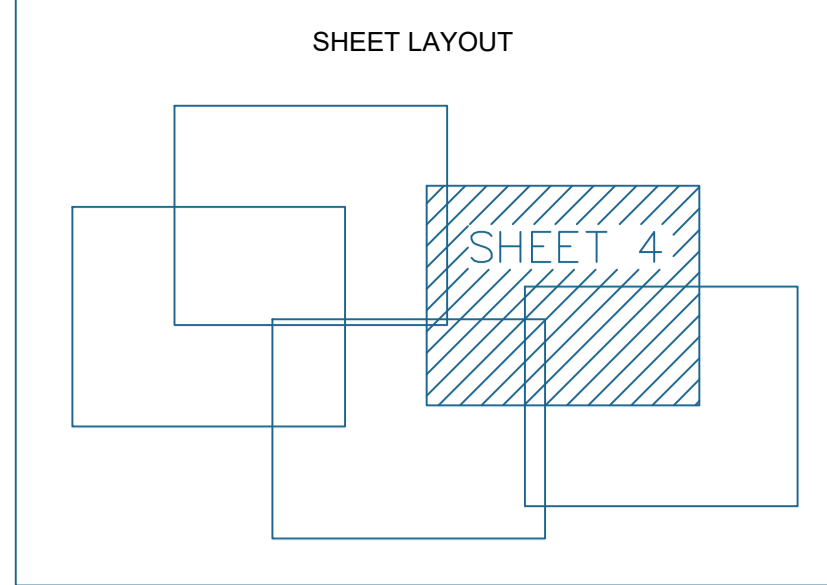
Drawing Number: TS23-483-4

Revision table with columns for Revision, Description, Rev. By, and Date.

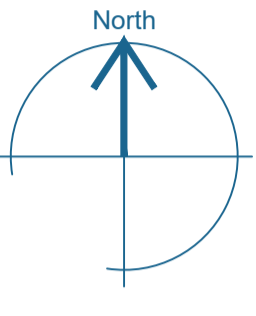
Scale: 1:200@A1, Sheet 4 of 5, Drawn by SC-ASL, Checked by PG, Date of Survey SEPT 2023

TERRAIN SURVEYS logo and contact information: Tel: 01438 841300, www.terrain-surveys.co.uk

Accreditations: chartered iccs, THE SURVEY ASSOCIATION, ISOQAR, U.K.A.S., Constructionline Gold Member, Acclaim Accreditation.

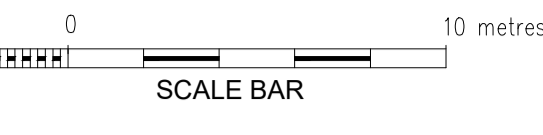
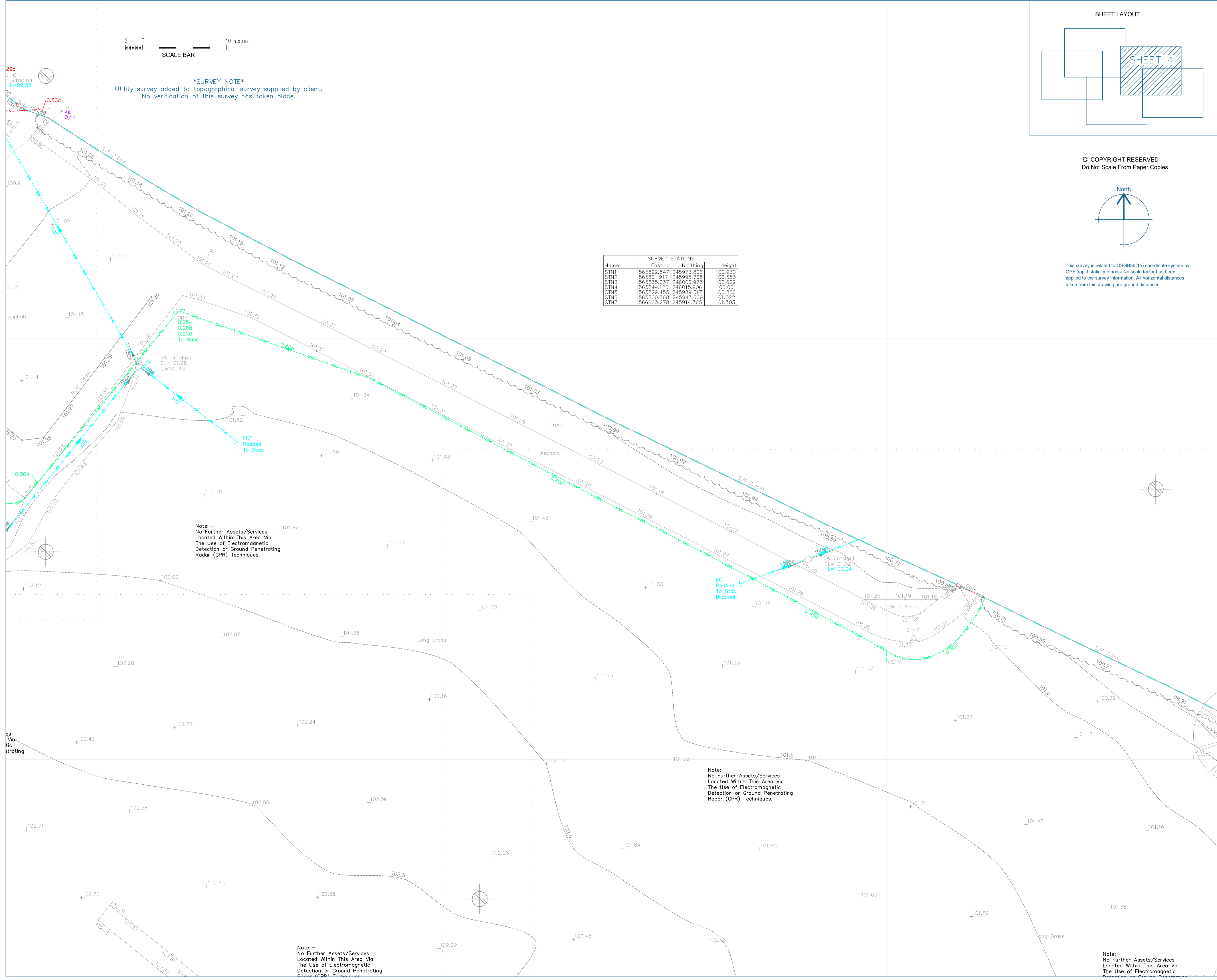


© COPYRIGHT RESERVED Do Not Scale From Paper Copies

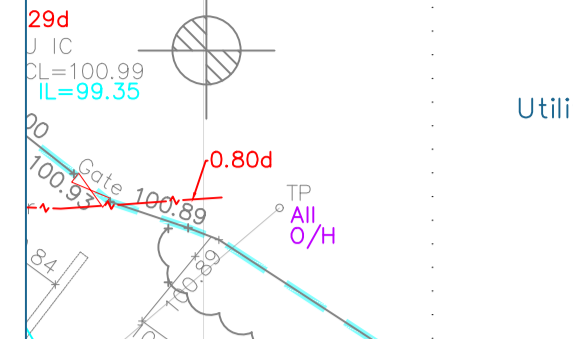


This survey is related to OSGB36(15) coordinate system by GPS 'rapid static' methods. No scale factor has been applied to the survey information...

SURVEY STATIONS table with columns: Name, Easting, Northing, Height. Lists stations STN1 through STN7.



SURVEY NOTE Utility survey added to topographical survey supplied by client. No verification of this survey has taken place.



Note: - No Further Assets/Services Located Within This Area Via The Use of Electromagnetic Detection or Ground Penetrating Radar (GPR) Techniques.

Note: - No Further Assets/Services Located Within This Area Via The Use of Electromagnetic Detection or Ground Penetrating Radar (GPR) Techniques.

Note: - No Further Assets/Services Located Within This Area Via The Use of Electromagnetic Detection or Ground Penetrating Radar (GPR) Techniques.

Note: - No Further Assets/Services Located Within This Area Via The Use of Electromagnetic Detection or Ground Penetrating Radar (GPR) Techniques.